

EQUIPMENT TRUCK

HYGIENE ON SITE / DECON P

The fire department equipment vehicle enables fast and safe decontamination of personnel and equipment at incident sites, in accordance with DGUV Information 205-035 and vfdb Recommendation MB 10-13.

During firefighting operations in particular, personal protective equipment (PPE) and carried tools become contaminated with a variety of hazardous substances, including PAHs (polycyclic aromatic hydrocarbons). In many cases, there is also a risk of contamination with asbestos, which poses a serious health hazard.

To prevent cross-contamination and, above all, the incorporation (intake) of hazardous substances, the equipment vehicle is equipped with a containment and clean separation system featuring a multi-chamber layout and a negative pressure HEPA filtration system for the decontamination of emergency personnel. In addition, it features a separate toilet room, an exterior awning and multiple equipment compartments.

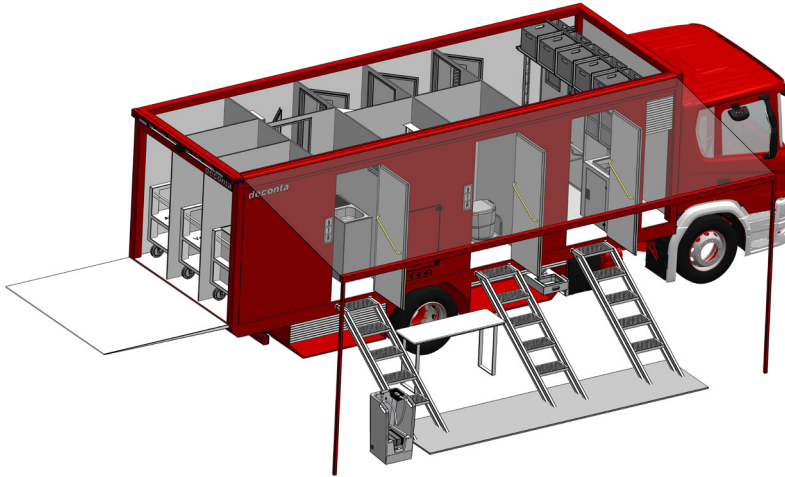


deconta
rescue



EQUIPMENT TRUCK

HYGIENE ON SITE / DECON P



TECHNICAL DESIGN

Dimensions box body with frame structure 6806 x 2550 x 2453 mm (L x W x H)

Total dimensions incl. chassis 9100 x 2550 x 3400 mm (L x W x H), Curb weight 11,24 tons

Equipment vehicle chassis with air suspension, approved for speeds up to 100 km/h, towing device with pintle hook

Water management system with hot water generation (diesel-powered), multi-stage wastewater filtration system and 300 L wastewater tank. Can operate autonomously or via external power supply.

Side marker lights, rear direction indicator (turn signal), rear outline marker light, high-mounted brake light, additional LED perimeter lighting, LED emergency blue light signal. Negative pressure containment system with HEPA filter

Exterior awning recessed into the side frame

Access via stairs, retractable into the frame

- Containment area with PPE disposal with PPE disposal ending in equipment room
- Shower room
- Changing room with shelving system for clean clothing
- Clean area with central control and function display via smart touch panel, showing wastewater tank level, HEPA filter status, battery charge level and equipped with a clothing rail system for storing protective garments
- Toilet room with separate entry
- Technical room
- Equipment compartments with pull-out washing station, removable boot washing machine, cooler box, breathing apparatus and hoses)
- Rear lift platform providing access to the equipment compartment

FURTHER OPTIONS:

Air conditioning, solar module, window, roof hatch, external awning with two side sections, folding seat, folding table, storage compartments, system cabinet, shelving baskets, washbasin, waste collector, safety cabinet, measuring and laboratory equipment, PPE ejection connection and more.



Extendable hygiene board



Mobile boot washing system with 2-stage wastewater filtration



Retractable steps



Negative pressure unit with HEPA filter



PPE disposal in the containment area



PPE disposal ends in a rollcontainer



Rear tail lift



Shower with 2-stage wastewater filtration



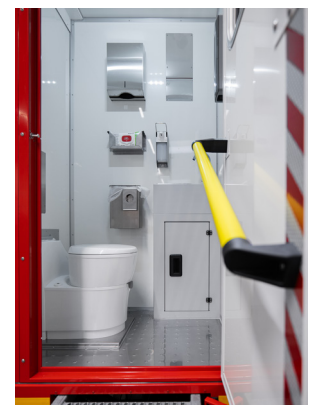
Drawer lock for clean clothes



Storage compartments and spare clothing



Touch control panel for system operation



Separate toilet room

FURTHER VERSIONS

TRAILER C5000



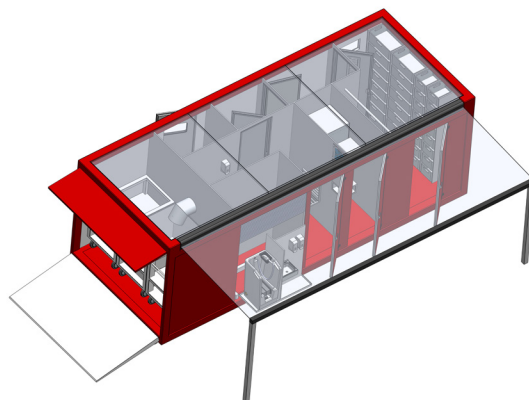
TRAILER C6000



TRAILER C6000MAX (2 SHOWER LINES)



ISO CONTAINER OR ROLL-OFF CONTAINER



**YOUR PARTNER FOR INNOVATIVE
DECONTAMINATION TECHNOLOGIES
MADE IN GERMANY**

deconta GmbH
Im Geer 20, 46419 Isselburg, Germany
Phone: +49 (0) 28 74 / 91 56 - 62
Email: cbrn@deconta.com

deconta.com

