

Equipment truck *Decontamination*

Hygiene on site / breathing protection



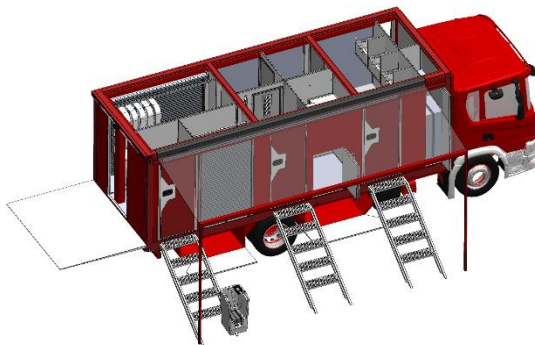
The fire brigade equipment truck enables quick and safe decontamination of personnel and equipment at the scene of an emergency in accordance with German principles of prevention (DGUV Information) 205-035 and vfdb directive MB 10-13. The personal protective equipment (PPE) and equipment being carried are contaminated by a wide range of hazardous substances, particularly during an inside firefighting attack. There is often even a risk of contamination with asbestos, which is highly hazardous to health (fire cancer).

To avoid the spread of contamination and in particular to prevent the incorporation of substances that are hazardous to health, the equipment truck has a contaminated and clean separation with a multi-chamber system and a negative-pressure HEPA filter system to decontaminate the emergency personnel. It also has a separate toilet room, an outdoor awning and several equipment rooms.



Equipment truck *Decontamination*

Technical design



Technical design

Dimensions of box body with frame construction 6806 x 2550 x 2453 mm (L x W x H)

Overall dimensions including chassis 9100 x 2550 x 3400 mm (L x W x H)

Empty weight 11,24 tonnes

Equipment truck chassis with air suspension approved up to 100 km/h

Towing device with ball head

Water management with hot water preparation (diesel operation), multi-stage sewage water filter system and sewage tank (300L)

Self-sustained operation or via external power input

Side marker lights, rear direction indicator (indicator light), rear outline light, high-mounted brake light, additional LED ambient lighting, LED special signal blue light.

Negative pressure unit with HEPA filter

External awning embedded in the side of the frame

Entrances via stairs, retractable in the frame

- Containment area with PPE ejection in equipment room
- Shower room
- Dressing room with shelving system for clean clothes
- Clean area with central operation and function display via smart touch display, display of sewage water tank fill level, HEPA filter occupancy, battery charge status and clothes rail system for storing protective clothing
- Toilet room with separate access
- Technical room
- Equipment rooms with extendable washing area, removable boot washing system, cool box, breathing apparatus and hoses)
- Rear lifting platform to equipment room



Equipment truck *Decontamination*



Extendable washing area



Mobile boot washing machine with 2-stage sewage water filtration



Extendable stair treads



Negative pressure unit with HEPA filter



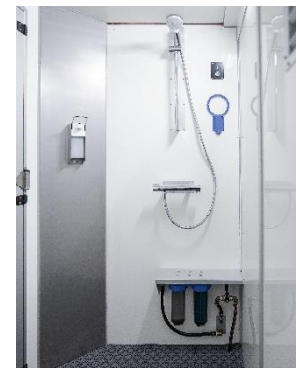
PPE ejection in containment area



End of PPE ejection into roll container



Rear lifting platform



Shower with 2-stage sewage water filtration



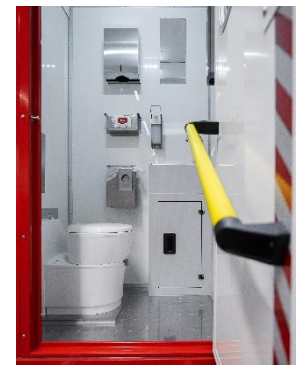
Lock for changing clothes



Storage compartments for changing clothes



Touch control panel for system control



Toilet room

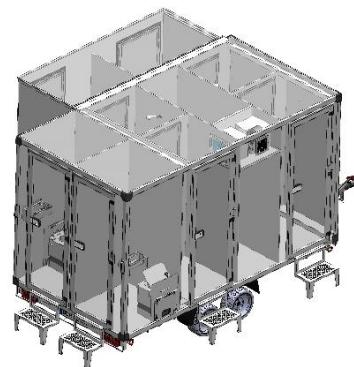


Equipment truck *Decontamination*

Further versions and options

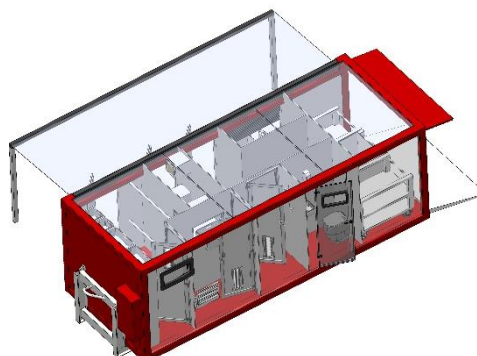
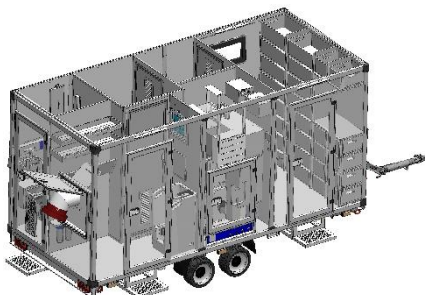
Trailer

Extract



Vehicle body

ISO container or roll-off container



Further options:

Air conditioning, solar module, window, roof hatch, external awning with two side sections, folding seat, folding table, storage compartments, system cabinet, shelving baskets, washbasin, waste collector, safety cabinet, measuring and laboratory equipment, PPE ejection connection and more.

deconta
rescue

deconta GmbH
Im Geer 20
Germany - 46419 Isselburg
Phone +49 (0)2874 915 662
E-Mail cbrn@deconta.com

