

Instruction manual

Water Management System

C 50 L / C 100 L



Manufacturer:

deconta GmbH
Im Geer 20, D - 46419 Isselburg

Description

Water Management **C 50 L** **Type 568, 549**
Water Management **C 100 L** **Type 567, 566**

Serial-No.:

.....

Table of contents

	on page
1 Basic safety advice	3
2 Transport and storage	4
2.1 Delivery	4
2.2 Transport	4
2.3 Storage	4
3 Volume of delivery	5
4 Technical description	5
4.1 Intended use	5
4.2 Unit description	5
5 Technical data	6
6 Initial operation	7
6.1 Version with one sewage pump	7
6.2 Version with two sewage pumps for 2 showers	9
7 Maintenance and care	11
7.1 Daily maintenance	11
7.2 Filter change	11
8 Circuit diagram	13
8.1 C 50 L with one sewage pump	13
8.2 C 50 L with two sewage pumps	14
8.3 C 100 L with one sewage pump	15
8.4 C 100 L with two sewage pumps	16
9 Declaration of conformity	17

The copyright of this instruction manual remains with **deconta**. This manual is intended for assembly, operation and maintenance personnel. It contains instructions and drafts of technical nature which may neither be distributed or used in any unauthorised way for competitive purposes nor passed on to others.

1 Basic safety advice

The handling of the appliance technology is only allowed for instructed staff. The exact knowledge of this manual is an important condition for the staff before handling the machine.

Please keep the instruction manual close to hand and available for everybody.

As an operator, you are obliged by **deconta** to follow the instruction manual and to use this engineered technology equipment only in accordance with the regulations and its suitability! In the event of non-observance, **deconta** assumes no liability.

To ensure safety during operation of the unit, the following must be strictly observed:

- Do not use in potentially explosive areas.
- Necessary repairs and maintenance may only be performed by authorized staff.
- For all repair and maintenance work, the device is to be completely disconnected from power supply
- The safety and protective equipment is to be kept in perfect function.
- Attached safety guidelines are to be kept in a readable state and are to be followed.
- Generally applicable legal and other binding regulations for accident prevention and handling of hazardous substances must be observed.

To ensure safety, any changes on the machine are prohibited.

ATTENTION!

The Waste water filtration unit is not suitable for the use in condensed, corrosive, flammable and explosive compartment air. The ambient and medium temperature must be between +5 and +50°C.

We make explicit reference to the additional regional and national safety policies and regulations in the operation of the equipment technology.

2 Transport and storage

2.1 Delivery

If no other agreements have been made, the unit is packed safely and will be delivered ex work. Transport damages have to be immediately documented by the carrier or another supplier. Please also note the possible damages on the way bill.

2.2 Transport

The Transport is to be proceeded with care to avoid damages by improper handling or carelessness.

It is important to avoid exposure to violent shocks, otherwise the function and safety of the unit cannot be guaranteed. In winter and at risk of frost, the whole unit (Pump, filter housing and tank) needs to be emptied before transport.

Attention: Transport of unit (also relocation) only when empty.

2.3 Storage

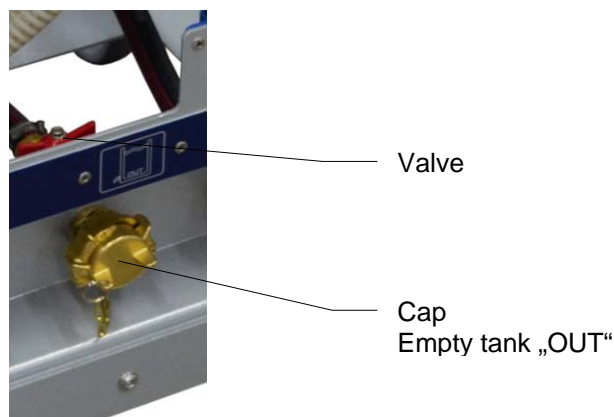
In order to avoid damages, the installation has to be kept in a dry area with no access for unauthorized persons.

Because of risk of frost in winter it is important to observe the following:

- Empty water hoses, filter housing, tank and pumps
- Place Water Management in a frost-protected area

Advice for the draining of the tank:

Beware: The Water temperature of the tank may be up to 80°C. To avoid scalding, we strongly recommend to allow the boiler to cool before emptying. To drain remove cap "empty tank" and tilt valve.



3 Volume of delivery

If no other agreements have been made, the scope of delivery of the water management unit consists of:

- Water Management System
- Filter
- Instruction manual

Return delivery after termination of rental period

We have to insist on following conditions for the return delivery in order to protect our clients and in accordance with the rules for hazardous materials transportation:

- As listed above
- Well cleaned (ready for use)
- Without binder remains
- Without damages
- Without filter

4 Technical description

4.1 Intended use

During asbestos sanitation works within closed rooms, you have to exclude that the asbestos fibres leave the sanitation area uncontrolled and endanger the human health and the environment. For this reason, personnel must leave the sanitation area through a lock system and take a shower while leaving.

The deconta water treatment assumes the heating of the shower water and takes over the filtering of the contaminated sewage water.

4.2 Unit description

This is an electric warm water storage for the heating of shower water. The desired outlet temperature is reached by heating of the storage water and adding of cold water in the temperature pre-mixer (factory-adjusted approx. 37°C). The produced shower water is pumped out and 3-stage filtered.

5 Technical data

	C 50 L	C 100 L
Volume service water	100 Liter	200 Liter
Tank filling	automatic	
Heating capacity	2000 W	
Filter stages	3	
Filter size	10"	
Power connection	230 V	
Power consumption	10 A / 12 A (at Option 2. Shower)	
Water connections	System Geka	
Dimensions (L x W x H)	760 x 700 x 1106 mm	760 x 700 x 1471 mm
Weight	123 kg	140 kg

Technical changes reserved

6 Initial operation

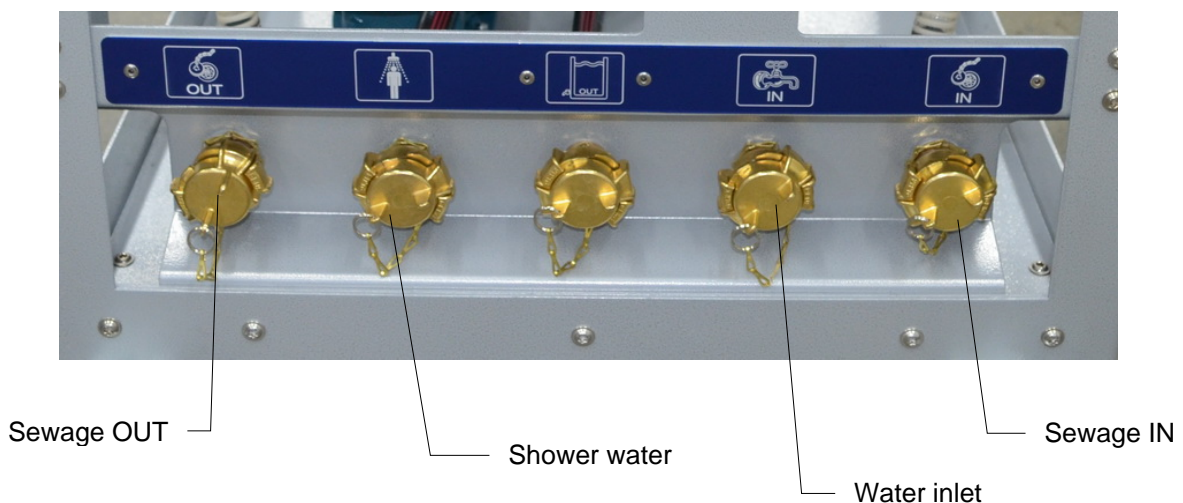
Before the initial operation of the waste water pump or after a long period of stagnation, check that the shaft rotates freely when turned by hand. To this put a screwdriver in the notch of the shaft end on the fan side and move the shaft. The strong initial rotational resistance of the new pumps will come loose after running.



Safety instructions:

During works on the device always disconnect the plug!
Operate the device only with mains which are secured with fault current protection switch!
Never operate the device without water! In case of frost risk, empty the device by opening the stopcock!
Do not change the adjustment of the temperature in the pre-mixing unit!
CAUTION! Danger of scalding
Check outlet temperature before every shower!
CAUTION! Danger of scalding

6.1 Version with one sewage pump

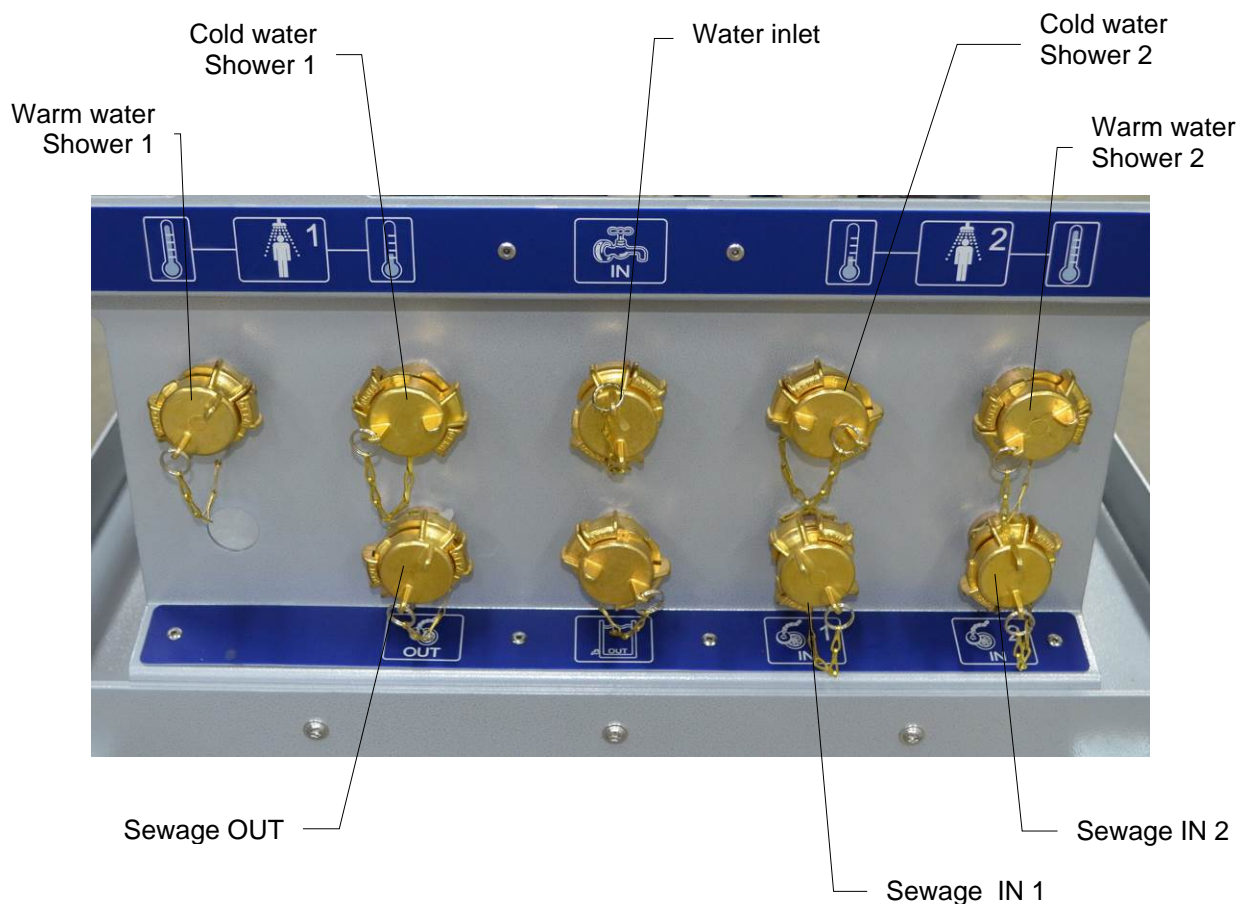


- Unplug
- Establish hose connections:
 - Connection „Water inlet“ with pipeline network
 - Connection „Warm water shower water“ with shower top
 - Connection „Sewage IN“ with shower tray
 - Connection „Sewage OUT“ with sewage system
- Fill waste water pump with water
- Fill filter housing of 220 μ Filter with water
- Tighten the union nuts of the filter housing hand tight
- Fill tank with water, open stopcock of shower until water is flowing
- Connect to power
- The storage temperature is adjustable between 35 °C (I) to 85 °C (III) via a knob. We recommend the position „e“, with a water temperature at approx. 60 °C. Heat loss and calcification are here at its lowest (warm-up time at 60 °C about 160 minutes). During heating expansion water may drip from the safety assembly (below the tank).
- the unit is now ready-to-operate



- Switch on „AUTO“, the shower may now run. During showering the waste water pump is switched on automatically.
- If switched to „MAN“ the waste water pump runs continuously.

6.2 Version with 2 sewage pumps for 2 showers



- Unplug
- Establish hose connections:
 - Connection „Water inlet“ with pipeline network
 - Connection „Warm water Shower 1“ with shower top
 - Connection „Cold water Shower 1“ with cold water connection of shower top (if available)
 - Connection „Warm water Shower 2“ with shower top
 - Connection „Cold water Shower 2“ with cold water connection of shower tip (if available)
 - Connection „Sewage IN 1“ with shower tray
 - Connection „Sewage IN 2“ with shower tray
 - Connection „Sewage OUT 1“ with sewage system
 - Connection „Sewage OUT 2“ with sewage system
- Fill waste water pump with water
- Fill filter housing of 220µ Filter with water
- Tighten the union nuts of the filter housing hand tight
- Fill tank with water, open stopcock of shower until water is flowing

- Connect to power
- The storage temperature is adjustable between 35 °C (I) to 85 °C (III) via a knob. We recommend the position „e“, with a water temperature at approx. 60 °C. Heat loss and calcification are here at its lowest (warm-up time at 60 °C about 160 minutes). During heating expansion water may drip from the safety assembly (below the tank).
- the unit is now ready-to-operate



- Switch on „AUTO“, the shower may now run. During showering the waste water pump is switched on automatically.
- If you switch to „MAN“ the waste water pump runs continuously.

7 Maintenance and care

7.1 Daily maintenance

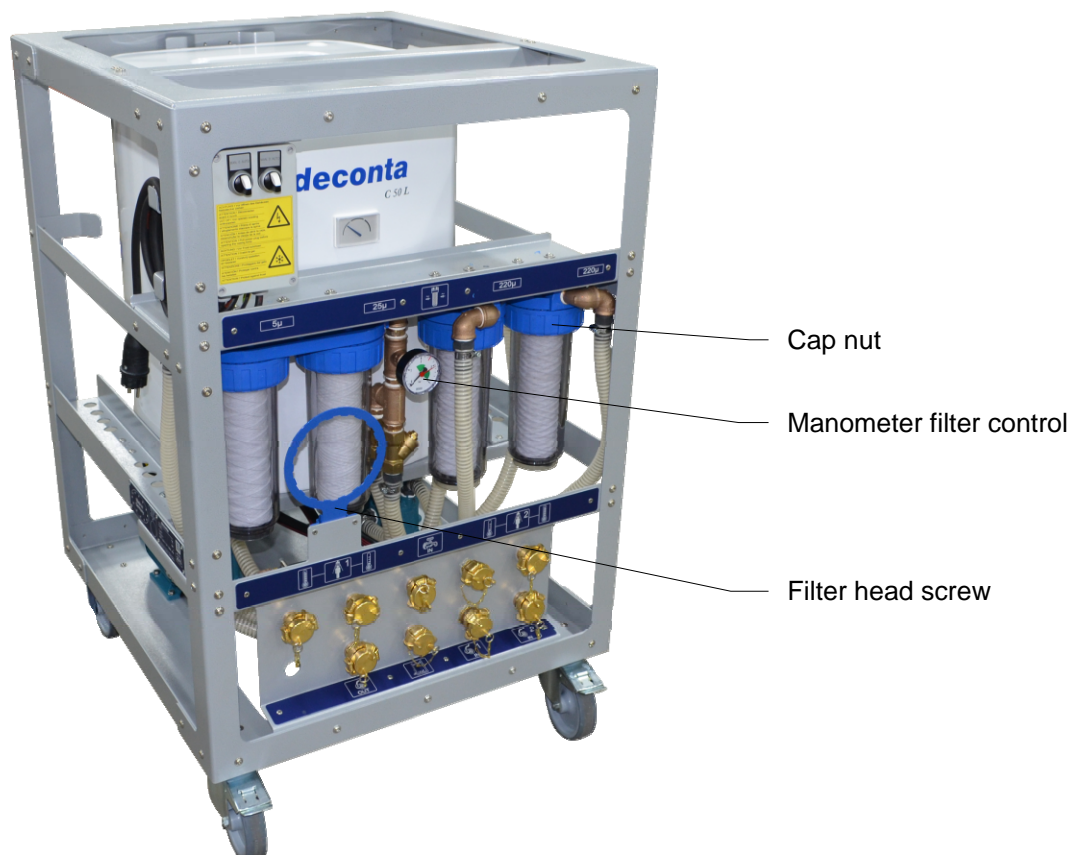
- Check hoses for free flow
- Visual check of 220µ-Pre filter for dirt
- Control of fine filter via manometer

7.2 Filter change

The Manometer controls the fine filter. We recommend a filter change at approx. 3bar.

Attention:

- Change Filter only when device is switched off
- Demount dirty filters only in wet shape to avoid contamination
- Use approved filters only
- Do not use damaged filter candles



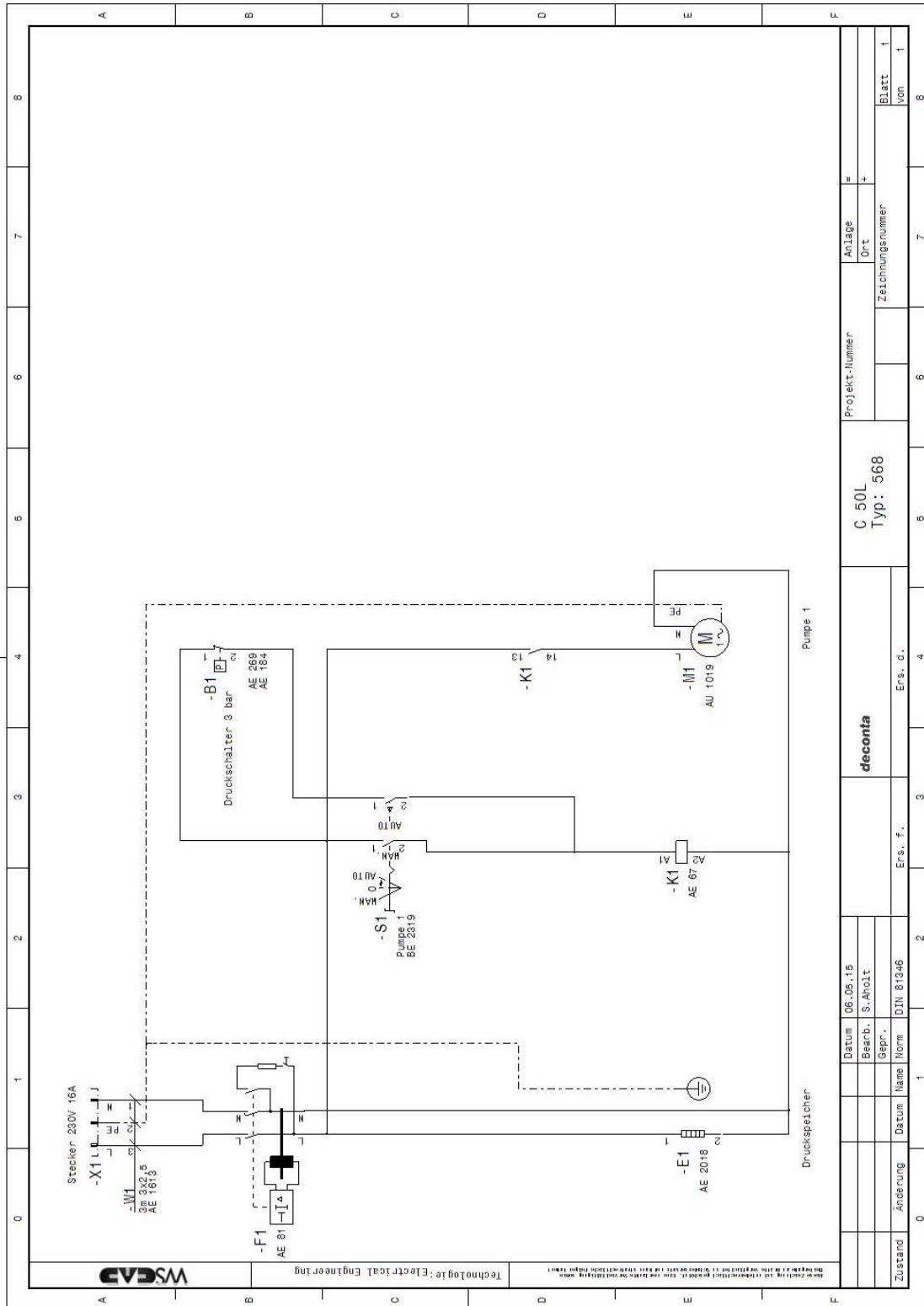
Filter change:

- Loosen cap nut with help of filter head screw
- Remove filter and dispose of it
- Insert new filter candles
- Pay attention to correct fit and cleanliness of the seal ring
- Tighten cap nut **by hand**

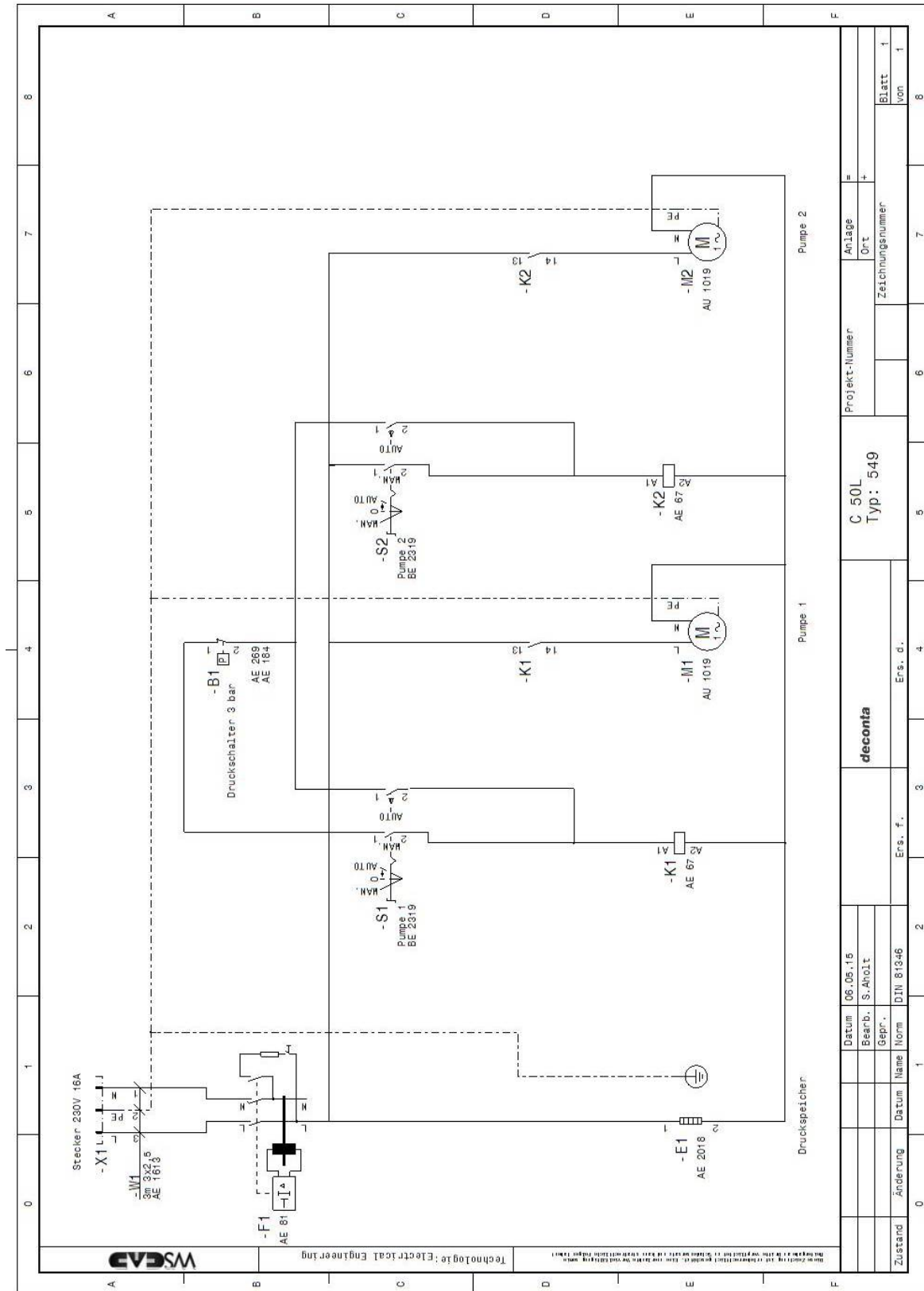
The suction hoses, pumps, filter housings and filter are contaminated after the first use. Repairs and maintenance must only be executed under the observance of all relevant safety measures. All the filters mentioned have to be disposed of according to the respective legal terms.

8 Circuit diagram

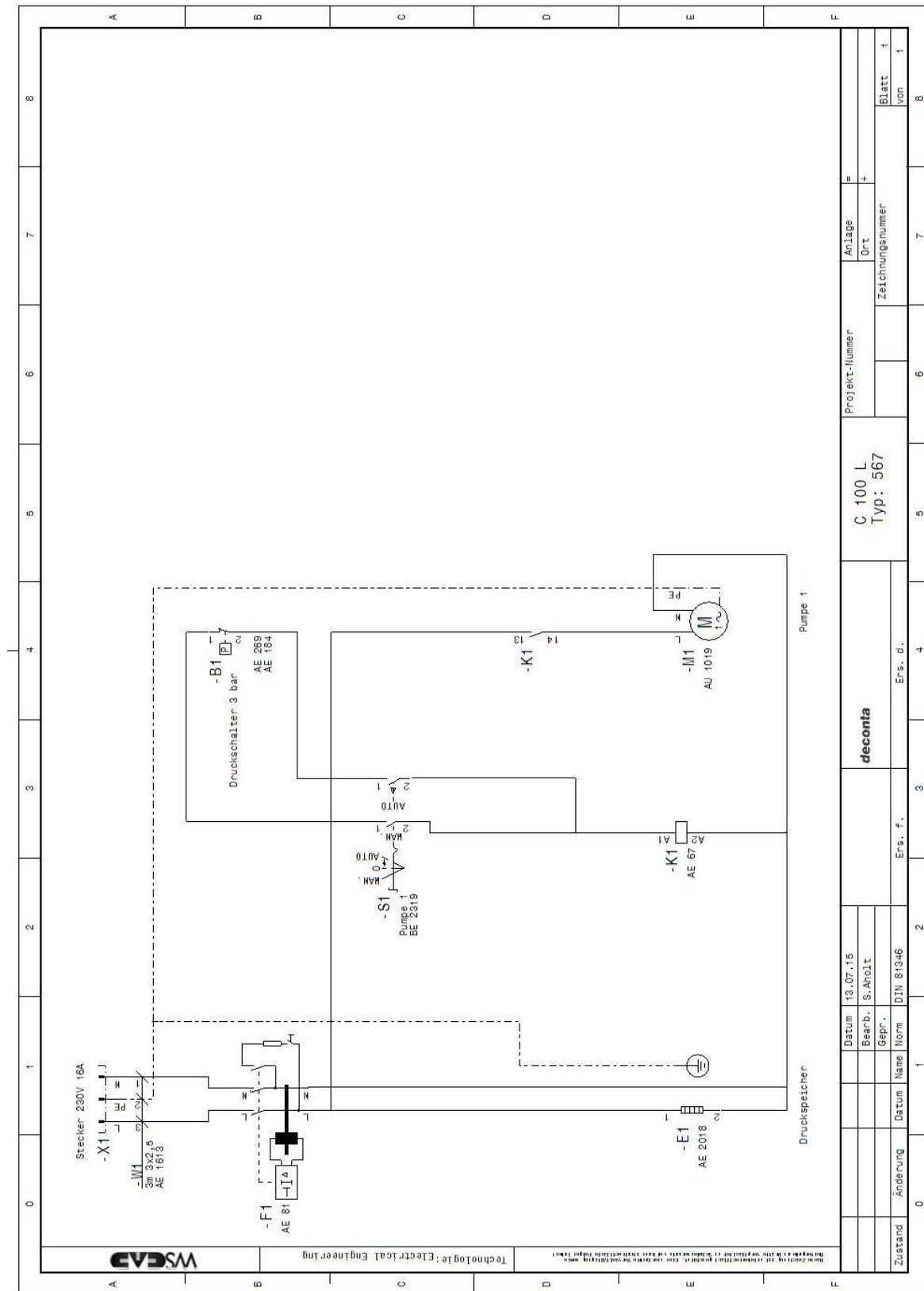
8.1 C 50 L with 1 sewage pump



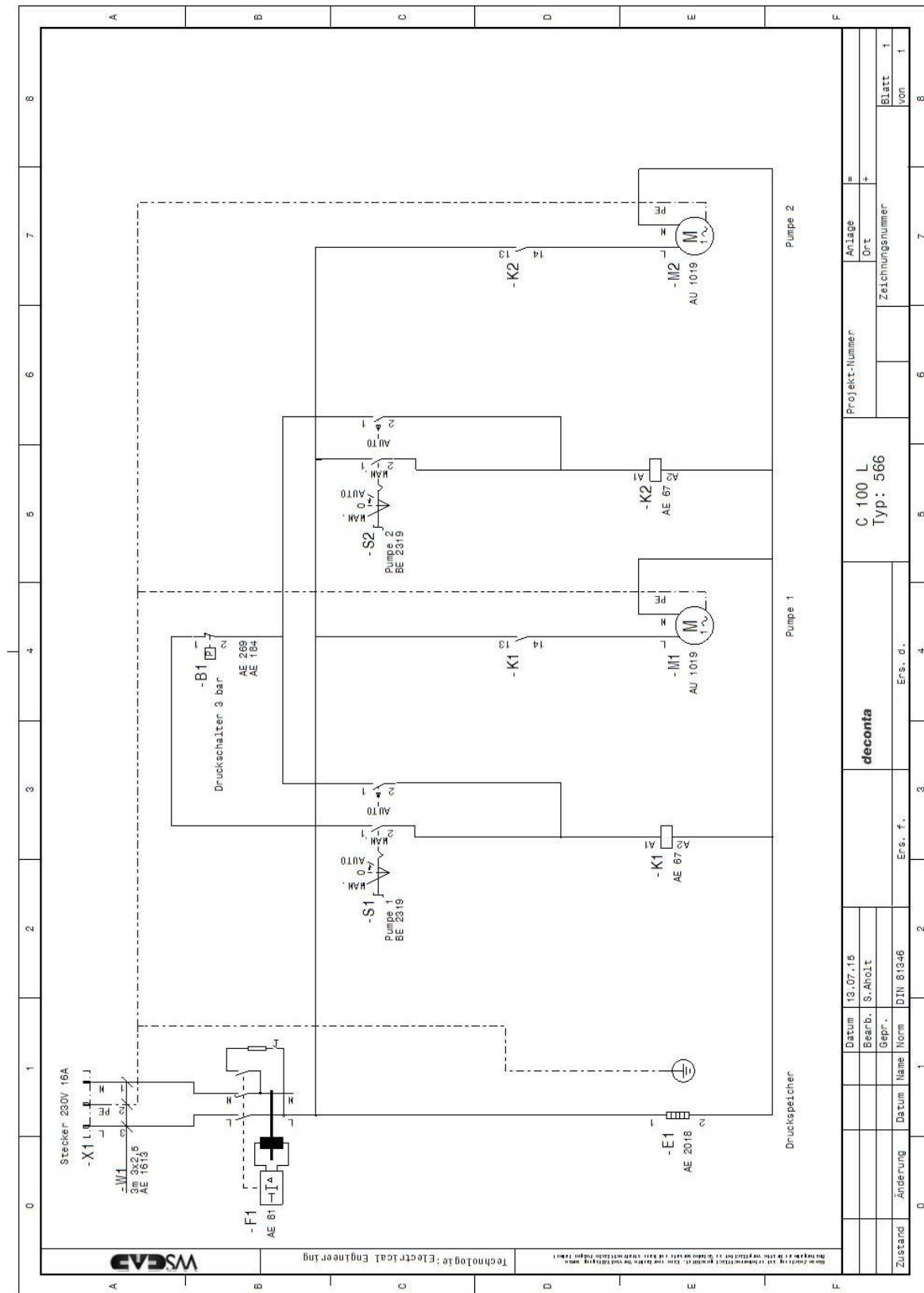
8.2 C 50 L with 2 sewage pumps




8.3 C 100 L with 1 sewage pump



8.4 C 100 L with 2 sewage pumps



9 Declaration of conformity

EU-Declaration of conformity	
deconta GmbH Im Geer 20 D-46419 Isselburg	
Product: Water Management C 50 L Water Management C 100 L	Type: 568, 549 Type: 567, 566
The design of the unit complies with the following directives:	EU- Machine directive 2006/42/EG EU- Low voltage directive 2006/95/EG
Applied harmonised standards:	EN 292, EN 60335-1
Applied national standards:	DIN VDE 0701, DIN VDE 0702
 W. Weßling	Isselburg, 24.06.2015